

DOMESTIC PUMPS



Watering the Life

Domestic Pumps



AQUASTRONG Co.,Ltd

Add: Via Bramante 3520154 Milano Italy
Tel: +39 0294 7591 77
Fax: +39 0294 7591 77
www.aquastrong.it
E-mail: info@aquastrong.it

CE ISO 9001

AQUASTRONG Co.,Ltd

About us

AQUASTRONG was established in 1990s as a global water pumps provider based in Italy, develops and sells pumps for house, garden, agriculture and commercial applications.

Nowadays **AQUASTRONG**'s strategy enables it to supply best price/performance ratio pumps with the process of controlling and monitoring quality starting from R&D, throughout manufacturing, marketing, sales, and after sales service.

As a trusted name that is highly appreciated by customers to serve their needs better than similar products available in the market, and is recognized for transparency in business relationship.

Our mission

To be recognized pump brand that offers clients a comprehensive range of high quality pumps of international standards and that suits the needs of customers in the world, and support these products with an after sales service according to our warranty policy.


Our values

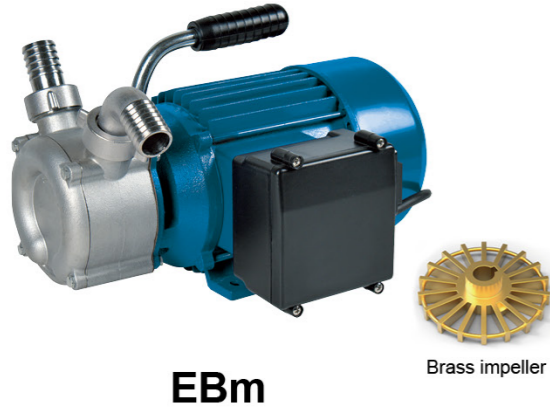
The core values of **AQUASTRONG** stem from the credibility of its products and relations with its clients. This credibility is evident in the careful control of product's standard, reliability, warranty and development. It also embraces our commitment of transparency and honesty in dealing with all stakeholders.

CONTENTS

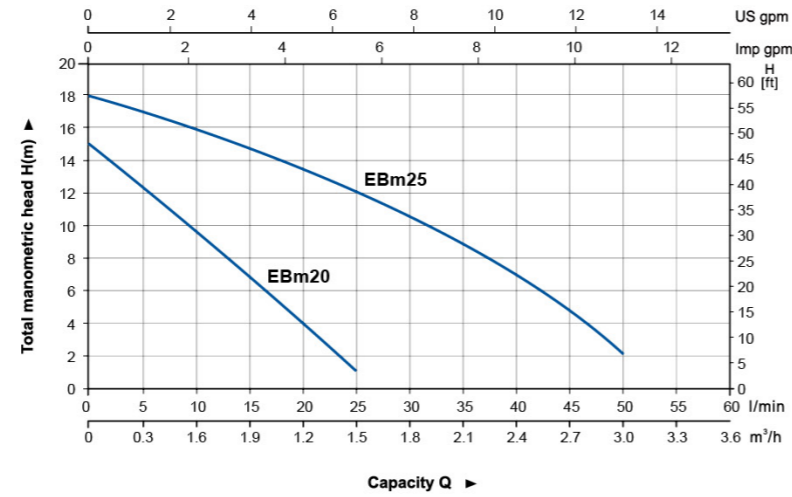
	• SUBMERSIBLE PERIPHERAL PUMP	P01
	• PERIPHERAL PUMP	P02 - 10
	• CENTRIFUGAL PUMP	P11 - 23
	• JET PUMP	P24 - 30
	• STAINLESS STEEL CENTRIFUGAL PUMP	P31 - 34
	• STAINLESS STEEL HORIZONTAL MULTISTAGE PUMP	P35 - 62
	• SEMI-OPEN IMPELLER STAINLESS STEEL CENTRIFUGAL PUMP	P63 - 64
	• GASOLINE WATER PUMP	P65 - 78
	• DOMESTIC LIFTING STATION	P79 - 80
	• POOL AND SPA PUMP	P81 - 82
	• GARDEN SUBMERSIBLE PUMP	P83 - 87

CONTENTS

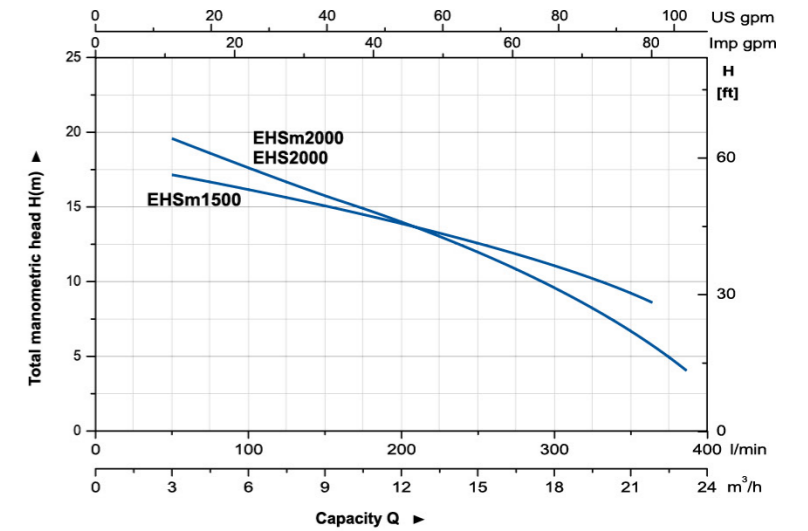
	• FOUNTAIN PUMP	P88 - 89
	• GARDEN JET PUMP	P90 - 92
	• PRESSURE BOOSTER PUMP	P93 - 97
	• SUBMERSIBLE PUMP	P98 - 103
	• STAINLESS STEEL SUBMERSIBLE SEWAGE PUMP	P104 - 116
	• SUBMERSIBLE SEWAGE PUMP	P117 - 144
	• STANDARD CENTRIFUGAL PUMP	P145 - 170
	• AUTOMATIC BOOSTING PUMP	P171 - 172
	• BOOSTER&CIRCULATION PUMP	P173 - 184
	• ACCESSORIES	P185 - 188



HYDRAULIC PERFORMANCE CURVE



HYDRAULIC PERFORMANCE CURVE



Pump

- Max. Liquid temperature: 35°C
- Max. ambient temperature: 60°C
- Max. Suction: 8 m
- Equipped with reverse switch for bidirectional rotation
- AISI 304 Pump body & cover, brass impeller
- AISI304 welding shaft

MODEL	POWER		INLET/OUTLET	MAX.FLOW (l/min)	MAX.HEAD (m)	MAX.SUCT (m)
	(kW)	(HP)				
EBm20	0.37	0.5	3/4" x 1"	25	15	8
EBm25	0.75	1.0	3/4" x 1"	50	18	8

Motor

- Built-in thermal protector
- Insulation class: F
- Protection class: IP 44
- 220~240V/50Hz, n=2850
- S1 continuous duty

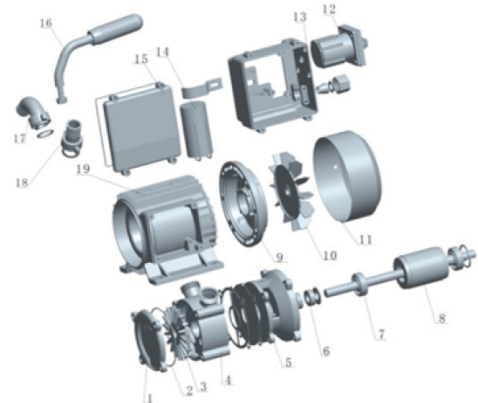
Pump

- Transfer of clean water or non-aggressive liquid
- Open impeller
- Special anti-rust treatment for pump body and support
- High flow and Medium/low head meet industrial and agricultural demand
- Max. liquid temperature: +60°C
- Max. suction: +8 m
- Semi-open impeller (Max.solid dia. 0.2mm)

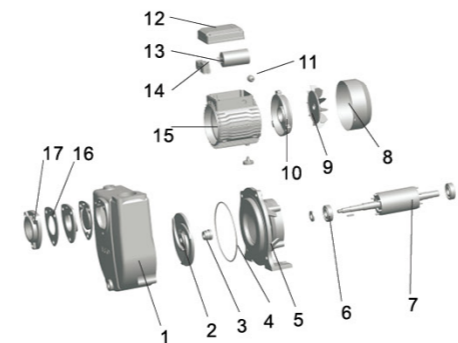
MODEL	POWER		INLET/OUTLET	MAX.FLOW (l/min)	MAX.HEAD (m)	MAX.SUCT (m)
	(kW)	(HP)				
EHSm1500	1.1	1.5	2" x 2"	360	18	8
EHSm2000	1.5	2.0	2" x 2"	390	23	8
EHS2000	1.5	2.0	2" x 2"	390	23	8

Motor

- Copper winding
- Built-in thermal protector for single phase motor
- Insulation class: F
- Protection class: IPX4
- Max. ambient temperature: +40°C



Part	Material
1 Pump cover	AISI304
2 O-ring	NBR
3 Impeller	Brass
4 Pump body	AISI 304
5 Support	HT200
6 Skeleton seal	
7 Bearing	
8 Rotor	
9 End plate	ZL 102
10 Fan	PP-GF15
11 Wind hood	08F
12 Reversing switch	
13 Terminal box	ABS
14 Capacitor	
15 Terminal box cover	ABS
16 Handle	Steel
17 Water elbow	ZCuZn38
18 Water inlet	ZCuZn38
19 Stator	



Part	Material	Remark
1 Pump body	Cast iron	E-coating
2 Impeller	Cast iron	
3 Mechanical seal	Ceramic/Carbon	
4 Sealing ring	NBR	
5 Support	Cast iron	E-coating
6 Bearing		
7 Rotor	Cold-rolled sheet	Welded stainless steel shaft
8 Fan cover	Iron	
9 Fan	Noryl	
10 End plate	Aluminum	
11 Outlet nozzle	NBR	
12 Cover box	ABS	
13 Capacitor		
14 Terminal		
15 Stator	Aluminum casting	Cold-rolled sheet
16 Sealing gasket	NBR	
17 Intlet connector	Cast iron	